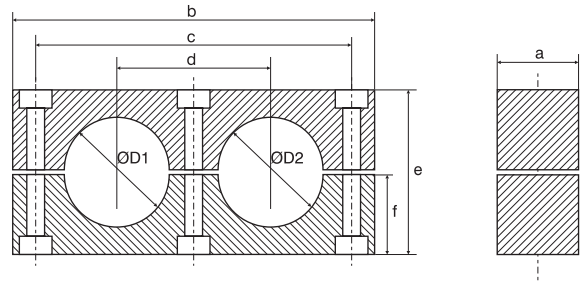


Collari doppi serie pesante in polipropilene o poliammide autoestinguente

Heavy duty double clamps in polypropylene and self-extinguishing polyamid



gruppo - group	diametro tubo pipe diameter		tipo di collare clamp type		dimensioni in mm dimension in mm					
	ØD1/ØD2 mm	pollici/inches G Ø	AMD.P polipropilene polypropylene	MMD.P poliammide self-extinguishing	a	b	c	d	e	f
4	19/19	3/4	AMD.P ₄ 19/19	MMD.P ₄ 19/19	30	115	90	45	48	24
	20/20		AMD.P ₄ 20/20	MMD.P ₄ 20/20						
	21,3/21,3	1/2	AMD.P ₄ 21,3/21,3	MMD.P ₄ 21,3/21,3						
	22/22	7/8	AMD.P ₄ 22/22	MMD.P ₄ 22/22						
	25,4/25,4		AMD.P ₄ 25,4/25,4	MMD.P ₄ 25,4/25,4						
	26,9/26,9	3/4	AMD.P ₄ 26,9/26,9	MMD.P ₄ 26,9/26,9						
5	32/32	3"	AMD.P ₅ 32/32	MMD.P ₅ 32/32	30	144	120	60	60	30
	33,7/33,7		AMD.P ₅ 33,7/33,7	MMD.P ₅ 33,7/33,7						
	38/38	3 1/2"	AMD.P ₅ 38/38	MMD.P ₅ 38/38						
	40/40	4"	AMD.P ₅ 40/40	MMD.P ₅ 40/40						
	42/42	4"	AMD.P ₅ 42/42	MMD.P ₅ 42/42						

coppia collare clamp body (2 halves)		piastra inferiore lower plate					piastra superiore cover plate					vite a testa esagonale hexagonal head screw			
AMD.P polipropilene polypropylene	MMD.P poliammide self-extinguishing	APINDP					APSDP					AVTEDP			
		2c	Ø m	Ø D	s	f	a	2c	Ø m	s	b	a	M	e	
4	AMD.P ₄ 19/19 C	MMD.P ₄ 19/19 C	APINDP₄					APSDP₄					AVTEDP₄		
	AMD.P ₄ 20/20 C	MMD.P ₄ 20/20 C	90	10	18	8	130	30	90	11	8	115	30	M10	60
	AMD.P ₄ 21,3/21,3 C	MMD.P ₄ 21,3/21,3 C													
	AMD.P ₄ 22/22 C	MMD.P ₄ 22/22 C													
	AMD.P ₄ 25,4/25,4 C	MMD.P ₄ 25,4/25,4 C													
	AMD.P ₄ 26,9/26,9 C	MMD.P ₄ 26,9/26,9 C													
5	AMD.P ₅ 32/32 C	MMD.P ₅ 32/32 C	APINDP₅					APSDP₅					AVTEDP₅		
	AMD.P ₅ 33,7/33,7 C	MMD.P ₅ 33,7/33,7 C	120	10	18	8	160	30	120	11	8	144	30	M10	70
	AMD.P ₅ 38/38 C	MMD.P ₅ 38/38 C													
	AMD.P ₅ 40/40 C	MMD.P ₅ 40/40 C													
	AMD.P ₅ 42/42 C	MMD.P ₅ 42/42 C													

* La produzione standard è di colore verde, colore nero su richiesta. / Standard production in green, black color on request.